

Features

Aimable Tweeter.
 Designer-friendly grill available in a square or round shape.
 Open back, 2-way design.

Cabinet Specifications

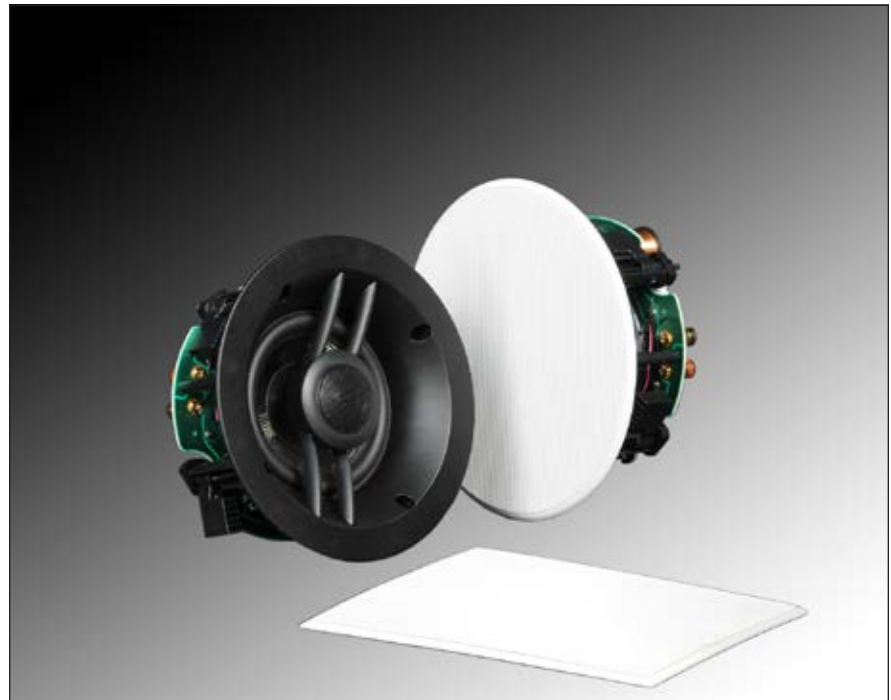
Width: 7 11/16" dia / 19.6cm dia
Depth: 3 3/4" / 9.5cm
Hole Cut Out - Width: 6 9/16" / 16.6cm
Frameless Grill Dimensions:
 8-5/16" dia or 8-5/16" x 8-5/16"
W: 21.1cm dia or 21.1cm x 21.1cm
Product Weight: 7.4lbs / 3.35kg
Shipping Weight: 11lbs / 4.98kg
(packaged 2 per box)
NCB Size: R5

Performance Specifications

Recommended Amp Power:
 25 - 125 watts
Impedance: 8 ohms
Sensitivity (db 1 watt/1 meter): 86
Anechoic Frequency Response:
 68 Hz - 20 kHz
Tweeter Type: Fabric dome
Tweeter Size: (1) 1" / 25mm
Woofer Type: Carbon fiber composite
Woofer Size: (1) 5-1/4" 14cm

Finishes

The standard finish for this product is White paint. For any other colors, please refer to Triad's Custom Match Finish program for this product.



INCEILING R25 OPENROUND

Triad's entry-level ceiling speaker has a lot to offer at a reasonable price, both in performance and looks. The InCeiling R25 features a quality carbon fiber woofer, and an adjustable and aimable tweeter for greater clarity at the listening position. The handsome grill is designer-friendly with a micro bezel and you have a choice of either a round or a square grill, at no additional cost.

The speaker can retro-fit into an existing ceiling, and new construction brackets are also available. Installation is simple and straight forward. Custom paint matching is available from Triad, at a modest cost. For distributed audio installations where sound isolation is not an issue, Triad's new InCeiling R Series speakers deliver exceptional performance and value with an elegant, unobtrusive appearance.